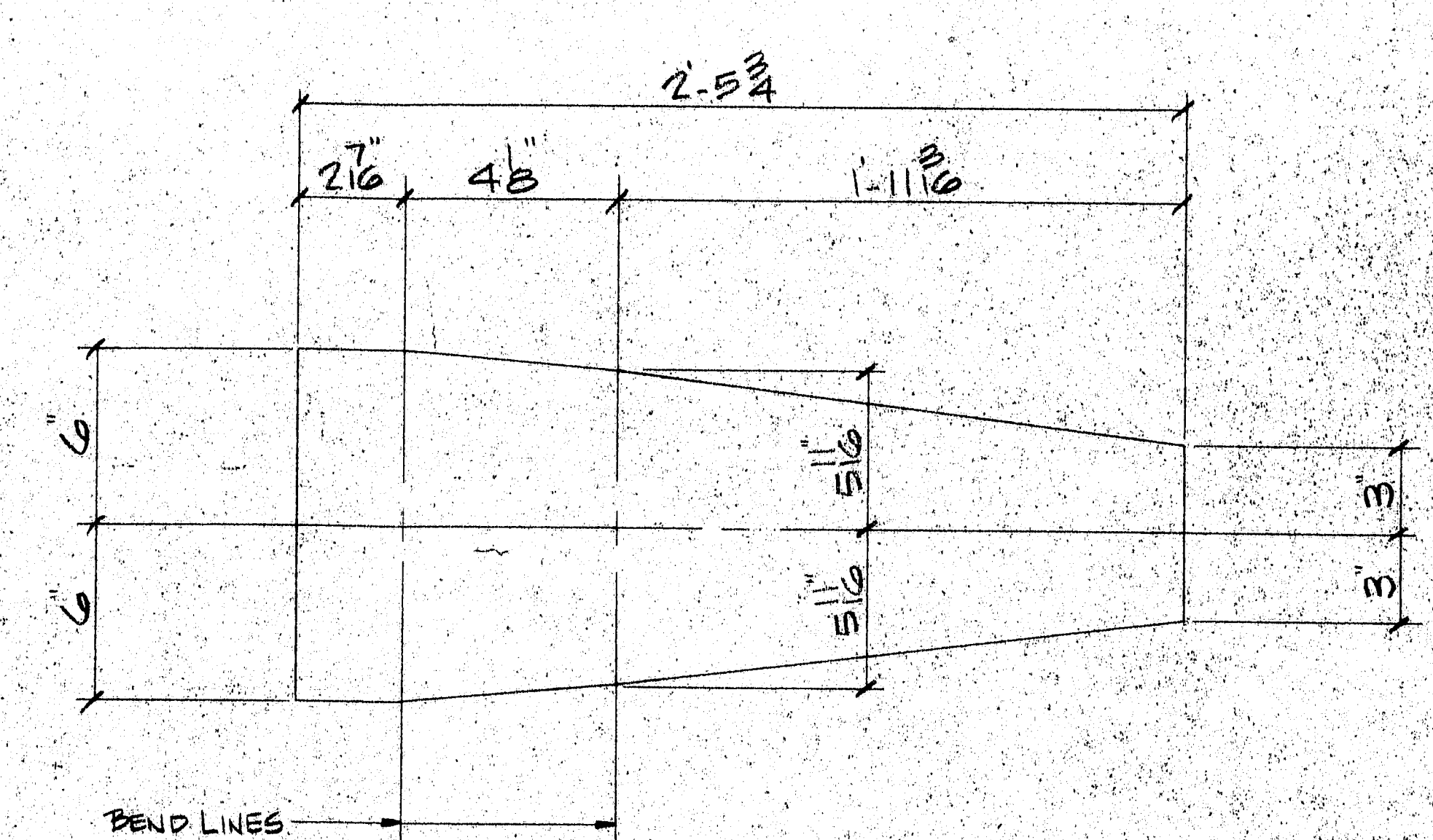
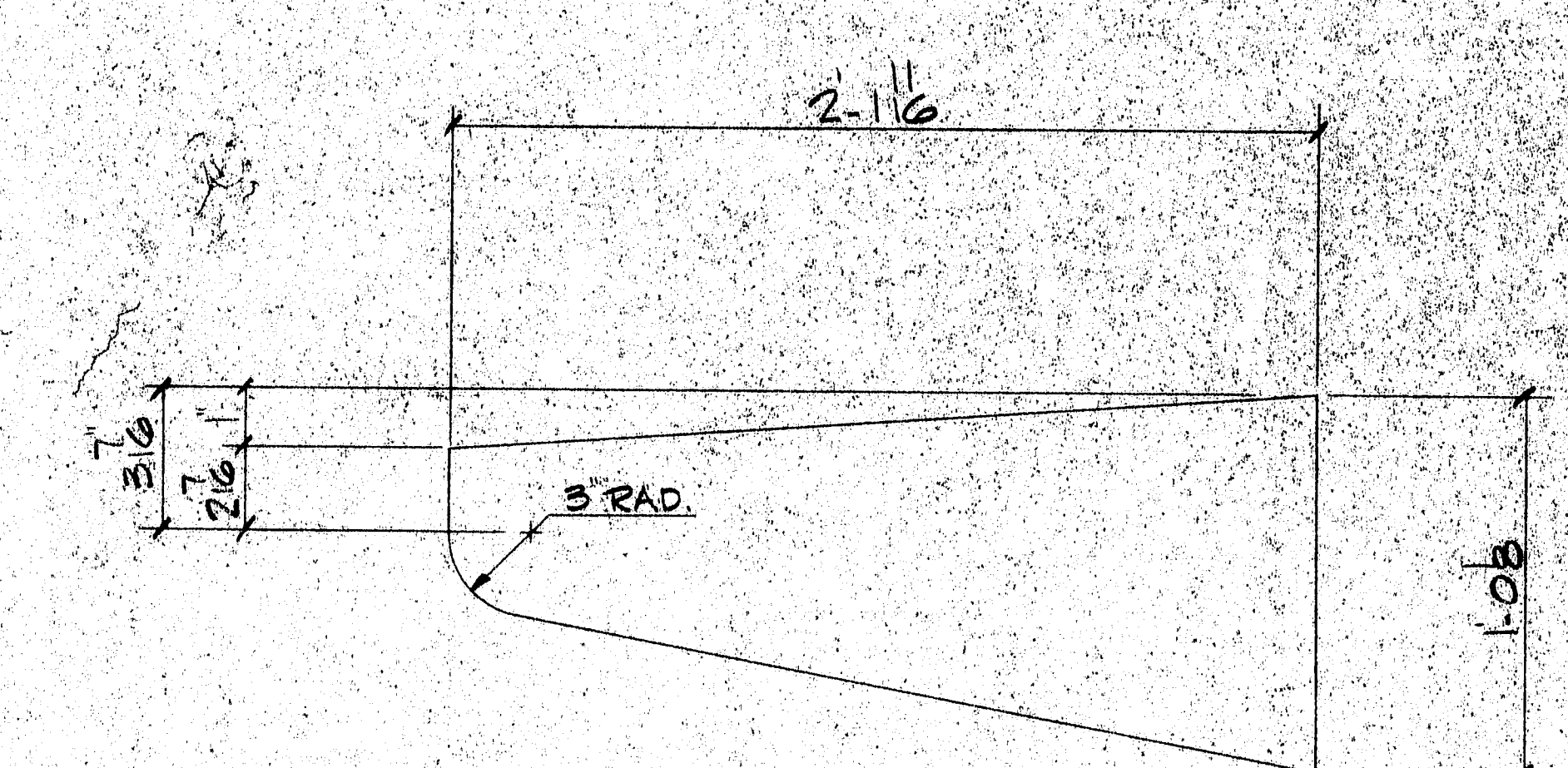


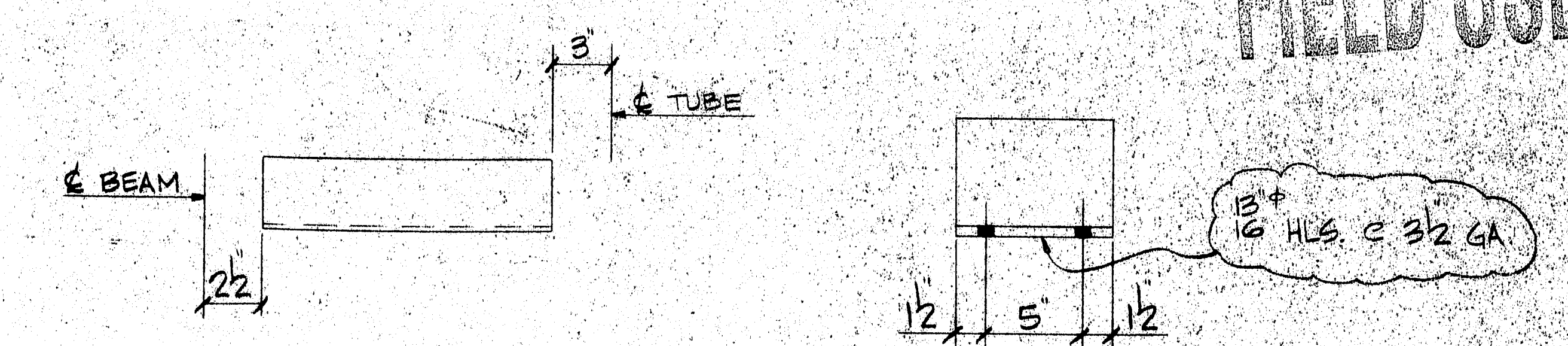
SECT. A-A
20-BRIDGE DRAINS-MK. A1



DEVELOPED DETAIL OF PA1



DETAIL OF PA1



20-CONN. ANGLES-MK. B1
20-CONN. TEES-MK. C1
4-2'
3/8\"/>

NOTES:
1) REFER TO M.D.O.T. STD. DWG. BD-521-93 & SPEC'S FOR INSTALLATION INSTRUCTIONS.
2) REFER TO SHT. 2 OF 19 OF DESIGN DWG'S FOR LOCATION OF DRAINS.

MATERIAL LIST		
MK.	QTY	DESCRIPTION
A1	20	DRAIN ASSEMBLY
MA1	20	TS6X6X4X3-10
MB1	20	9\"/>

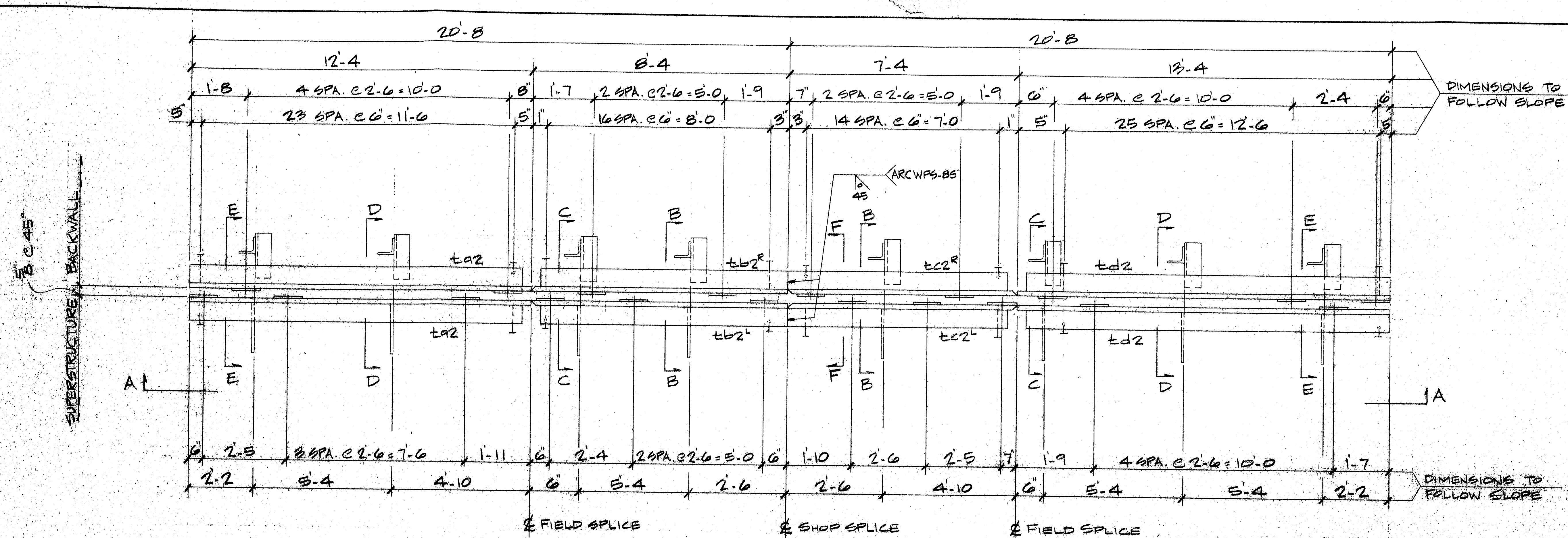
MAT'L: A36 DOM. HOLES AS NOTED
WELD: PER WELD PROCEDURE
PREP: SP6
FINISH: GALV. PER A.S.T.M. A123
PROJ. NO.: BH-0205(2) X
ITEM NO.: 502.19

ARC ENTERPRISES
KINGFIELD, ME

SCUPPER DETAILS

CUST.: DIAZ CORP
SOUTH BRIDGE OVER ANDREWS CREEK
BETWEEN LEWISTON & AUBURN, ME

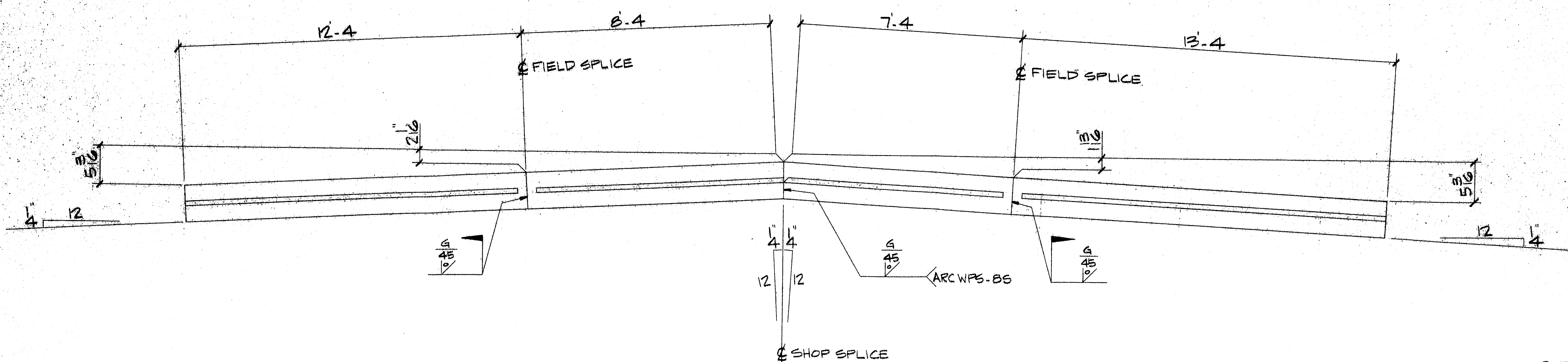
7/1/96 #96 GS



ONE-EXPANSION DEVICE - MK. A2

ONE-EXPANSION DEVICE - MK. B2

ONE-EXPANSION DEVICE - MK. C2



SECTION A-A

FIELD USE

SHOP NOTES!

- 1) WORK THIS DWG. WITH DWG. #3
- 2) APPLY PAINT ONLY WHERE NOTED.

MATERIAL LIST

NO.	QTY.	DESCRIPTION
A2	1	EXPANSION DEVICE
EA2	2	WT4x24x12-4
FA2	2	FB3x2x1-3 CLIP
PA2	10	FB1x3/8x1-0
CA2	6	FB3x2x0-5
MA2	48	2" x 0-8 H.S.A.
MB2	2	3" x 0-24 A325 W/NEZN
MC2	3	1/2" x 0-34 A307 W/NSW
MD2	3	1/2" x 0-23 A307 W/NSW
AA2	2	L32x32x3/8 x 1-3
AB2	1	L32x32x3/8 x 0-10B
AC2	1	L32x32x3/8 x 0-9B
B2	1	EXPANSION DEVICE
EB2	1	WT4x24x6-4
FB2	1	WT4x24x7-4
PA2	3	FB
PB2	3	FB
PC2	6	FB
MA2	64	2" H.S.A.
MB2	3	3" BOLT
MC2	3	1/2" BOLT
MD2	3	1/2" BOLT
AA2	3	L
AB2	2	L32x32x3/8 x 1-0 3/4
AC2	1	L32x32x3/8 x 0-10B
C2	1	EXPANSION DEVICE
EC2	2	WT4x24x13-4
FA2	3	FB
PA2	11	FB
CA2	6	FB
MA2	32	1/2" H.S.A.
MB2	3	3" BOLT
MC2	3	1/2" BOLT
MD2	3	1/2" BOLT
AA2	3	L
AC2	1	L
AD2	1	L
AE2	1	L
D2	1	COMPRESSION SEAL WABO WC-1250 X62-0 KIT

MAT: A36 DOM. HOLES: AS NOTED
WELD: PER WELD PROCEDURE
PREP: SP6
FINISH: 3 COATS ZINC RICH PRIMER
1ST COAT 3 M.D.F.T.
2ND COAT 3 M.D.F.T.
3RD COAT 3 M.D.F.T.

ARC ENTERPRISES
KINGFIELD, ME.

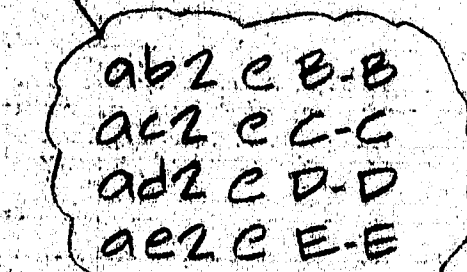
EXPANSION JOINT @ ABUT. ONE

CUST.: DIAZ CORP.

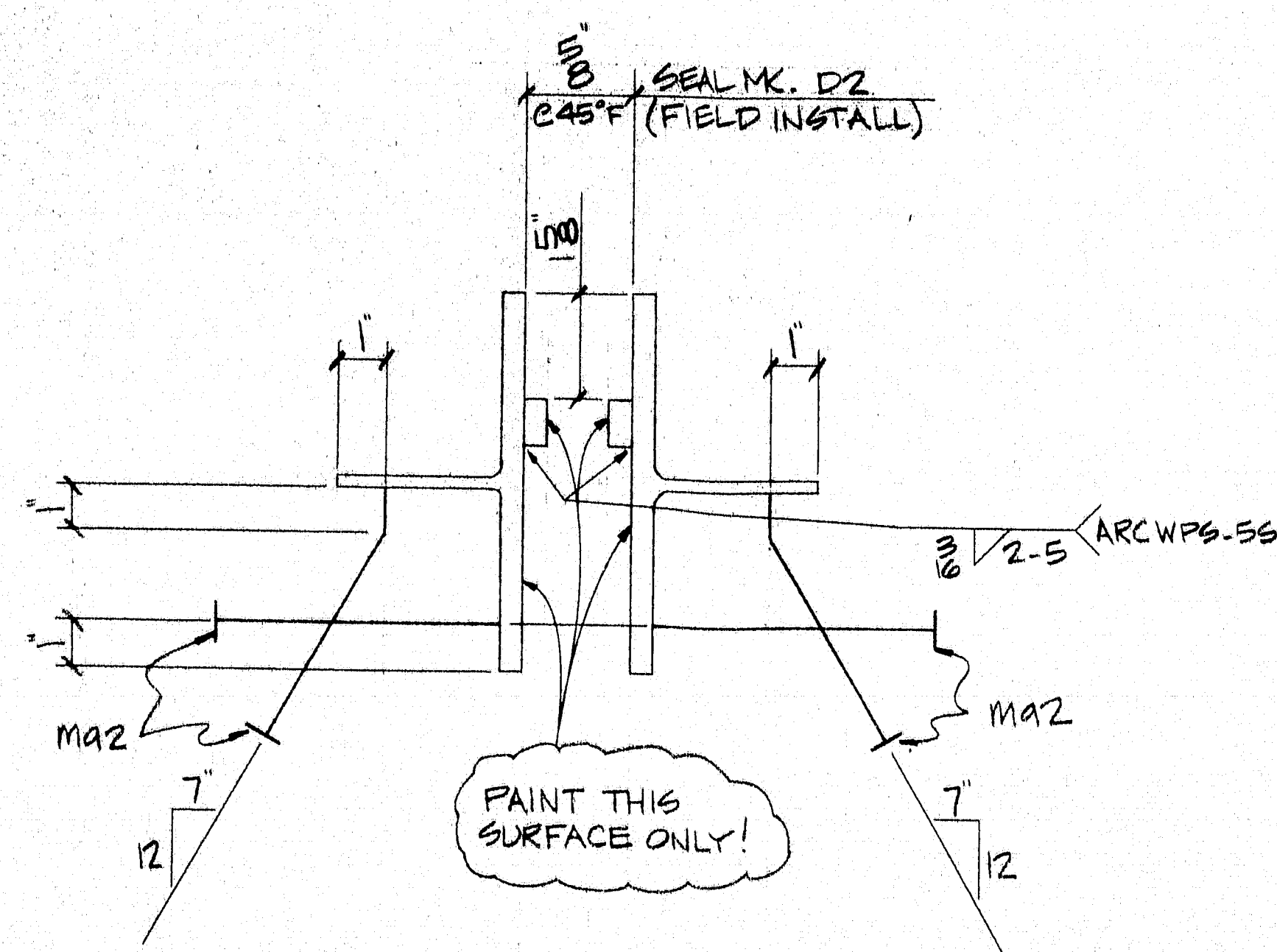
SOUTH BRIDGE OVER ANDROSCOGGIN RIVER
BETWEEN LEWISTON & AUBURN, ME.

DATE: 7/12/96 DRAWING NUMBER: #96-05

PROJ. # BH-0205 (2) X
ITEM # 520.22 115-389



SECT. E-E



SECT. F-F



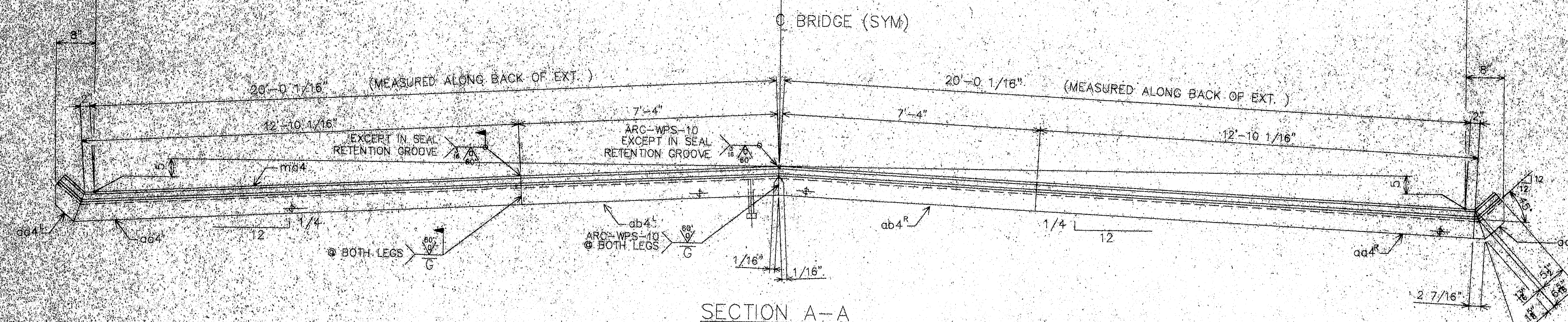
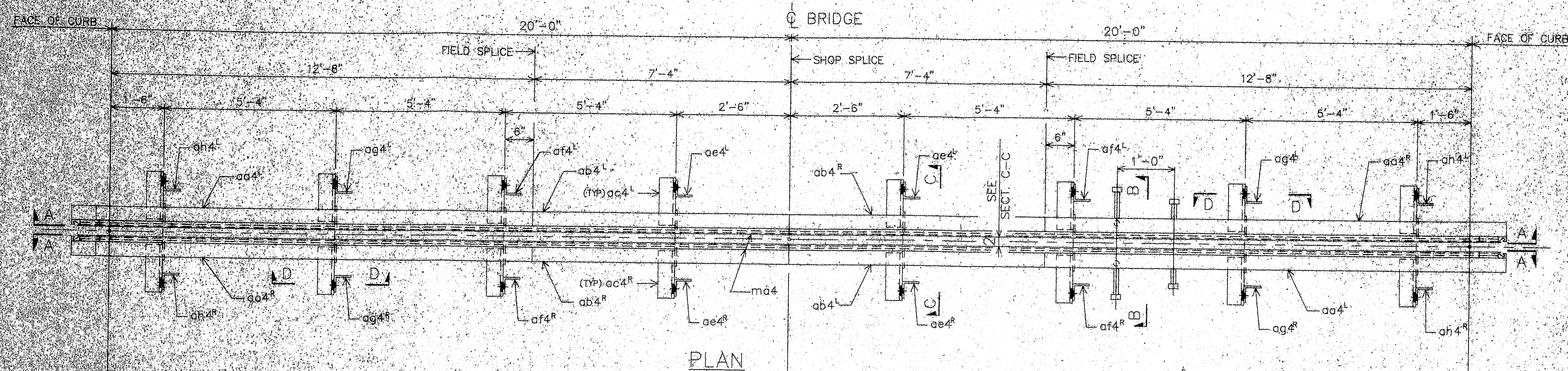
- 1) WORK THIS DWG. WITH DWG. #2
- 2) APPLY PAINT ONLY WHERE NOTED.

PROJ. # BH-0205(2) X
ITEM # 520.22

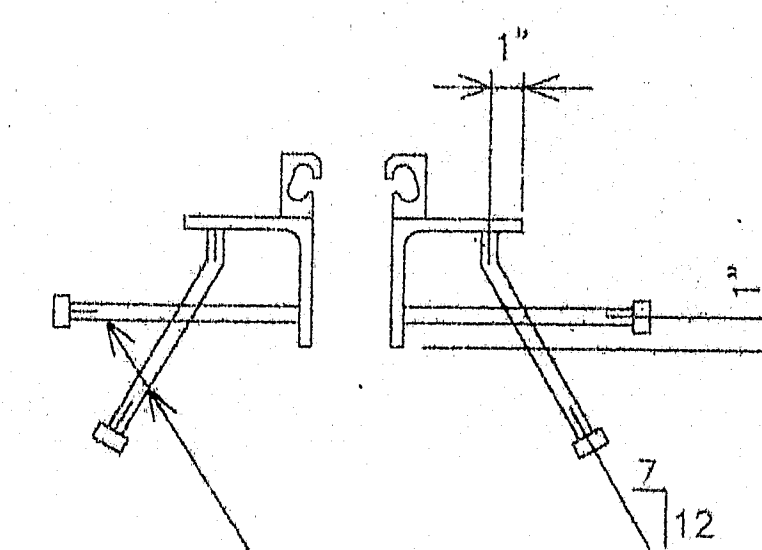
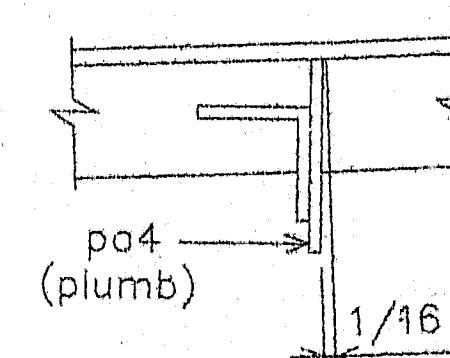
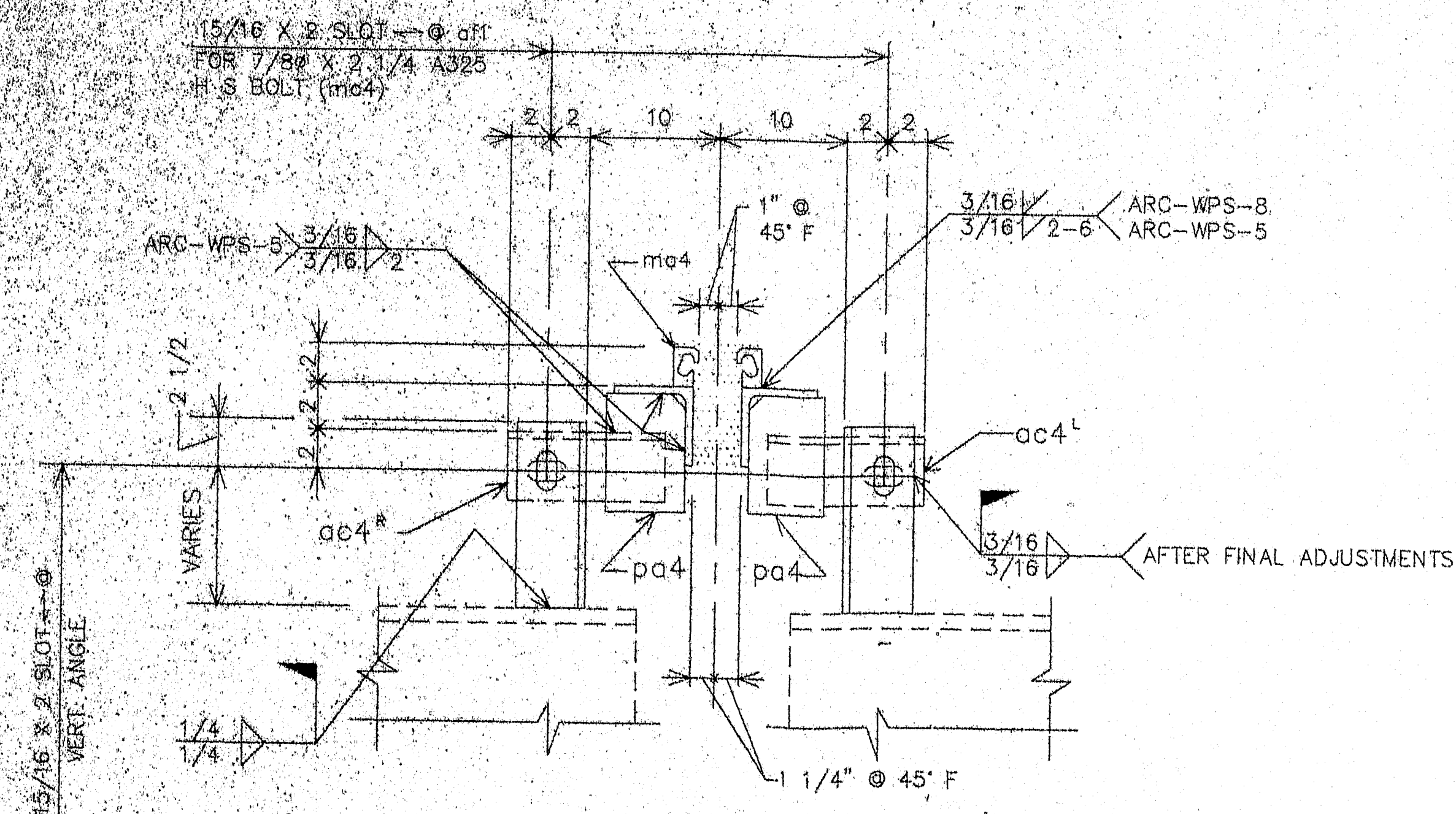
115-390

FIELD USE

ARC ENTERPRISES KINGFIELD, ME.		
SECTIONS		
CUST: DIAZ CORP	SCALE	DRAWN BY: MSS
SOUTH BRIDGE OVER ANDROSCOGGIN RIVER BETWEEN LEWISTON & AUBURN, ME.		
DATE 7/3/96	PROJECT NO. #96-65	DRAWING NUMBER 3



2-EXPANSION DEVICE-A4



SHOP NOTE
KICK pg4 IN OPPOSITE DIRECTION
ON OTHER SIDE OF CENTER LINE.

SECTION C-C

PAINT NOTE :
PAINT ONLY SURFACES IN THE SHADED AREAS.
NO PAINT IN THE AREA WHERE SEAL IS TO BE SEATED.

MATERIALS LIST		
MK	QTY	DESCRIPTION
A4	2	EXPANSION DEVICE ASSEMBLY
ad4	8	L 4 x 4 x 3/8 x 13'-0 1/2 BTE 41/4R
ad4	8	L 4 x 4 x 3/8 x 7'-4 BTE 41/4R
ad4	32	L 3 1/2 x 3 1/2 x 3/8 x 0'-11 161/16
ad4	8	L 3 1/2 x 3 1/2 x 3/8 x 0'-7 15/16 41/4
ad4	8	L 3 1/2 x 3 1/2 x 3/8 x 1'-1 1/4 21/2
ad4	4	L 3 1/2 x 3 1/2 x 3/8 x 0'-11 1/4 21/2
ad4	4	L 3 1/2 x 3 1/2 x 3/8 x 0'-10 5/8 21/2
ad4	8	L 3 1/2 x 3 1/2 x 3/8 x 0'-9 7/8 21/2
ad4	32	L 3 1/2 x 3 1/2 x 3/8 x 0'-6
po1	32	PL 3/8 x 4 x 6'-6
mc4	1F	Watson Bowman Acme type A extrusion x 18'-0
mb4	1/6	1/2 x 0'-8 CONG STUDS
md4	32	7/8 x 0'-2 1/4 H S BOLTS w/ N&2W A325
md4	16	THREADED ROD 1/2 x 0'-6 w/ 4 NUTS/EA
mf4	32	5/4 x 0'-2 H S BOLTS w/ N&2W A325
FIELD	2	Watson Bowman Acme SE400 Grand Seal x 45'-0 with Adhesive

MATL: A36 UN HOLES: AS NOTED
WELD: PER PROCEDURES NOTED
PREP: SP6
FINISH: 3 S/C OF WASSER MC-ZINC

FIELD USE

A.R.C. ENTERPRISES
KINGFIELD, MAINE

PROJECT: SOUTH BRIDGE OVER ANDROSCOGGIN RIVER
LEWISTON-AUBURN MAINE

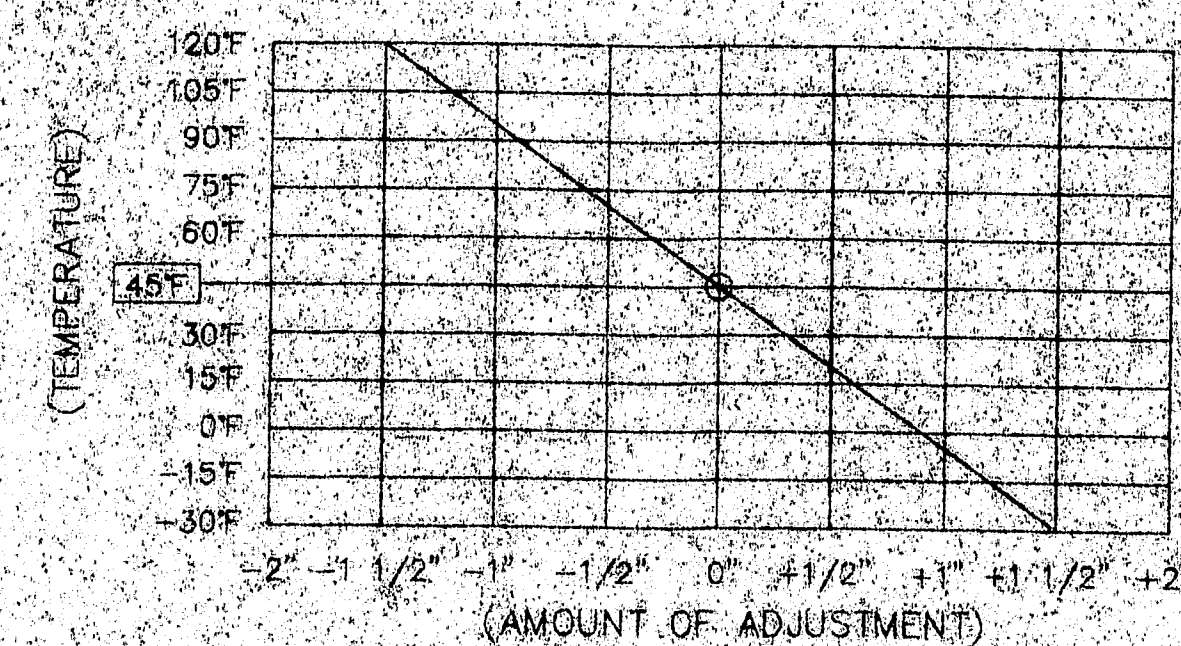
SCALE: ~	APPROVED BY:	DRAWN BY: HB/COMDS
DATE: 8/96		CHECKED BY: 125

EXPANSION JOINT @ PIERS # 1 & 2

DIAZ CORP	JOB NO. 96-65	DWG. NO. 4
-----------	---------------	------------

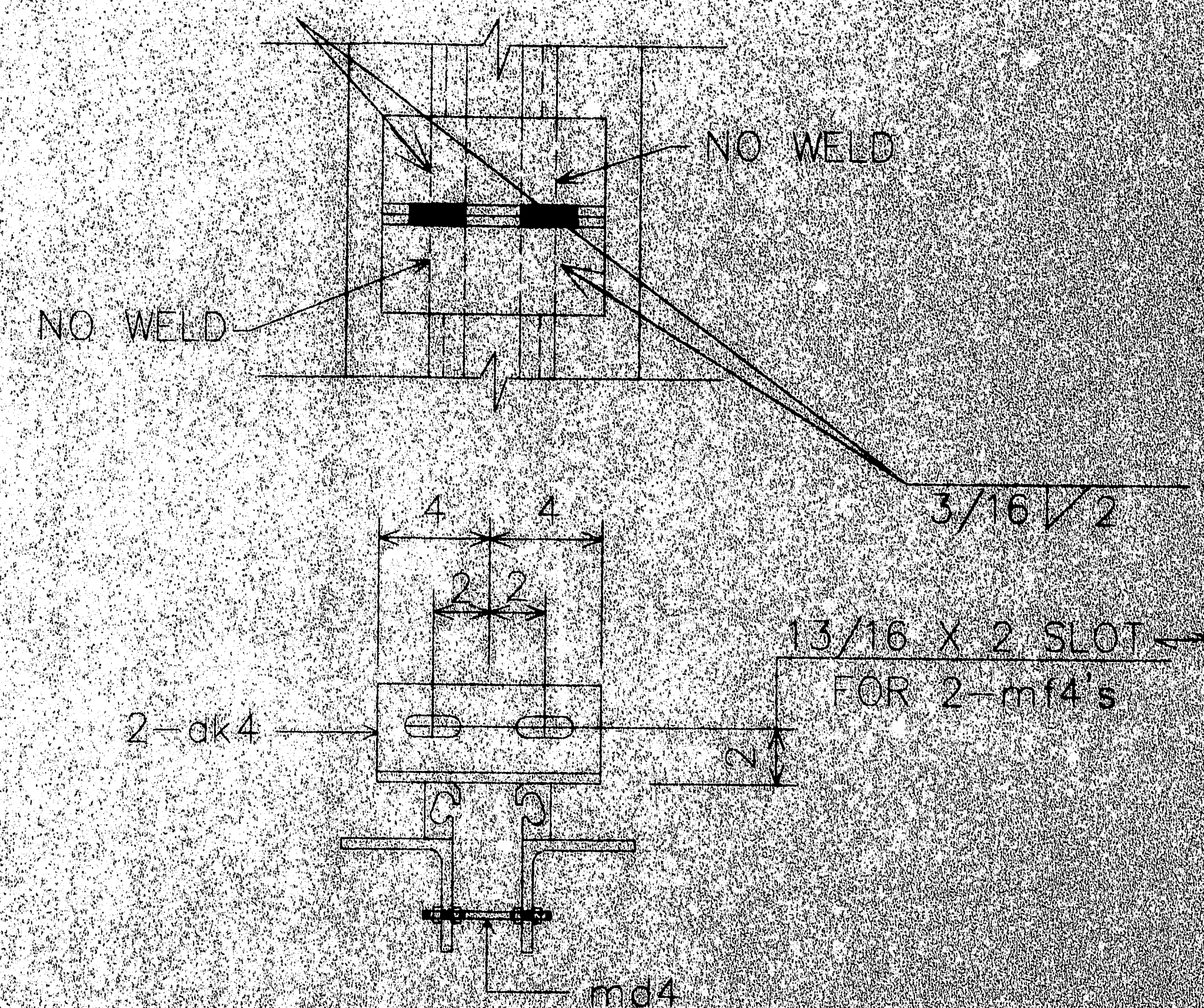
WORK THIS DWG W/ DWG 5

115-391



TEMPERATURE ADJUSTMENT CHART

FIELD NOTE:
ADJUST JOINT OPENING FOR TEMPERATURE AT TIME
OF INSTALLATION.



TEMP. ADJUSTING & SHIPPING DEVICE

NOTES:

- 1) SHOP PLACE ADJUSTING & SHIPPING DEVICES ON EXPANSION JOINT AT APPROX. 5'-0" O.C.
- 2) PRESET THE OPENING TO 2", AS SHOWN ON PLANS. ENGINEER TO ADVISE CONTRACTOR TO OPENING WIDTH AT TIME OF INSTALLATION.
- 3) CONTRACTOR TO REFER TO DESIGN DWG'S & SPECS FOR INSTALLATION INSTRUCTIONS.
- 4) CONTRACTOR TO TOUCH-UP PAINT AFTER REMOVAL OF SHIPPING DEVICES.

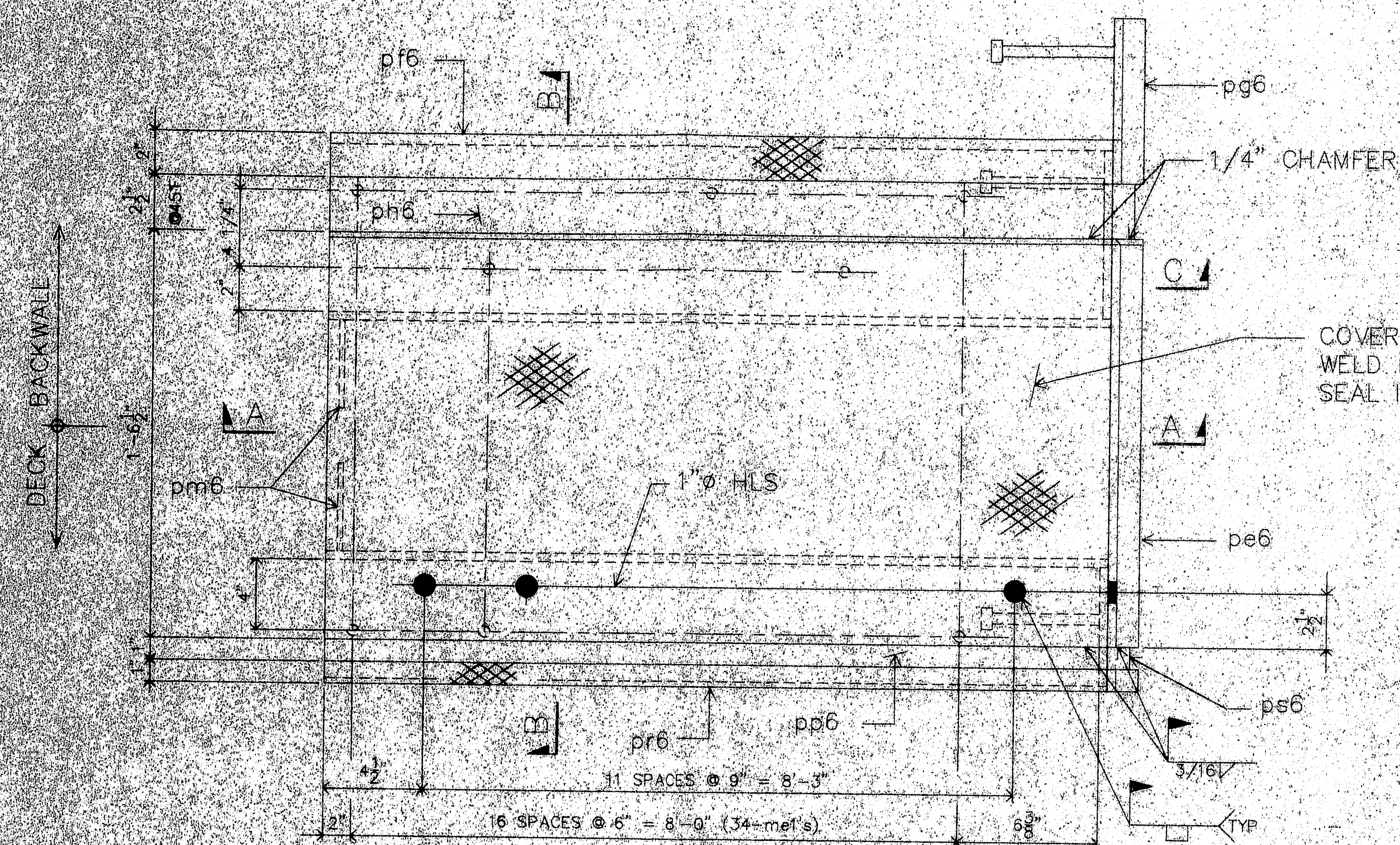
FIELD USE

PROJECT NO. BH-0205(2)X
ITEM NO. 520.21

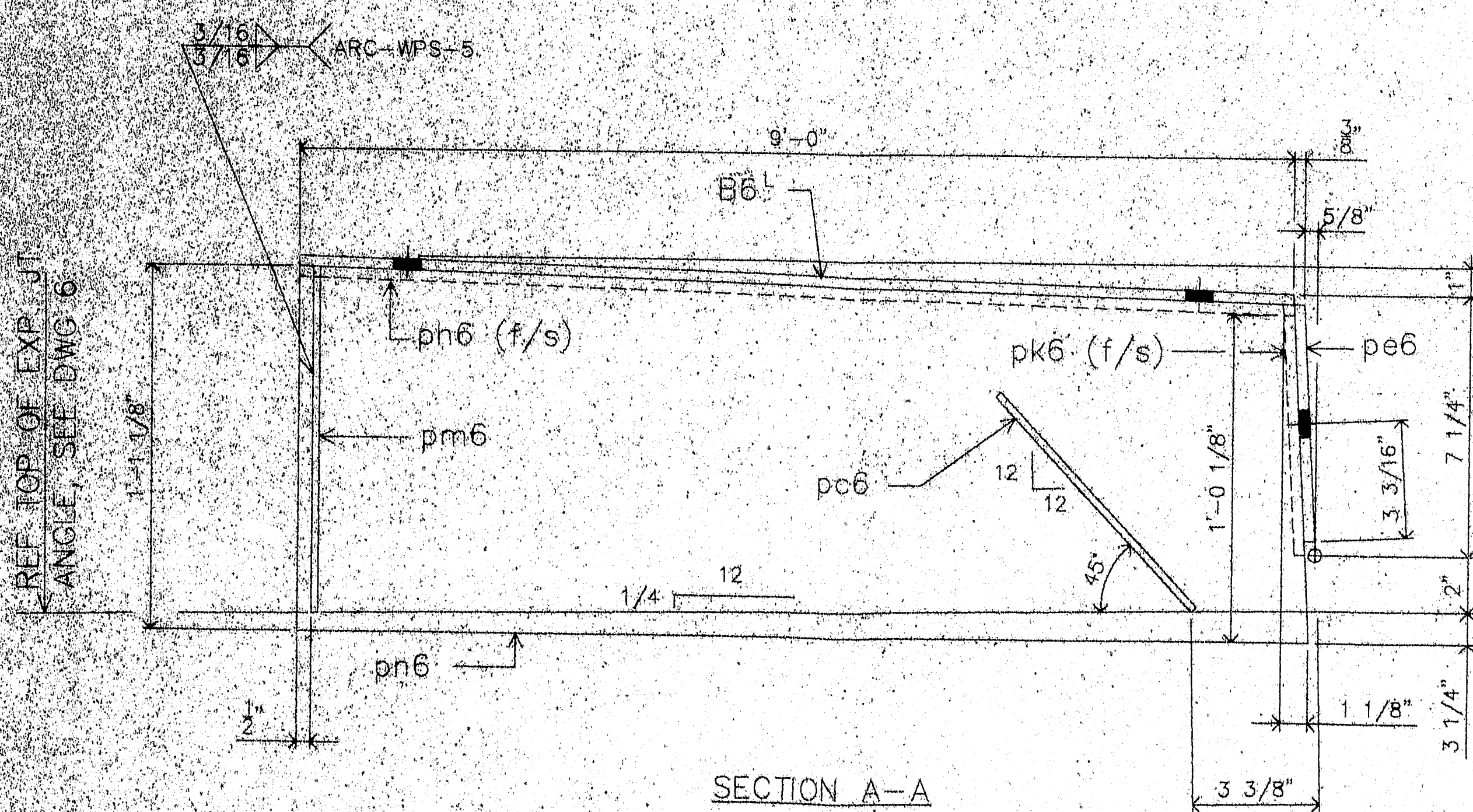
A.R.C. ENTERPRISES KINGFIELD, MAINE		
PROJECT: SOUTH BRIDGE OVER ANDROSCOGG RIVER LEWISTON-AUBURN, MAINE		
SCALE: 1/4"	APPROVED BY:	DRAWN BY: BH/TMB
DATE: 8/98		CHECKED BY: ARC
EXP. JOINT • PIERS 1 & 2 • ABUT 1		
DIAZ CORP		DWG. NO. 2

115-392

WORK THIS DWG. WITH DWG. 4

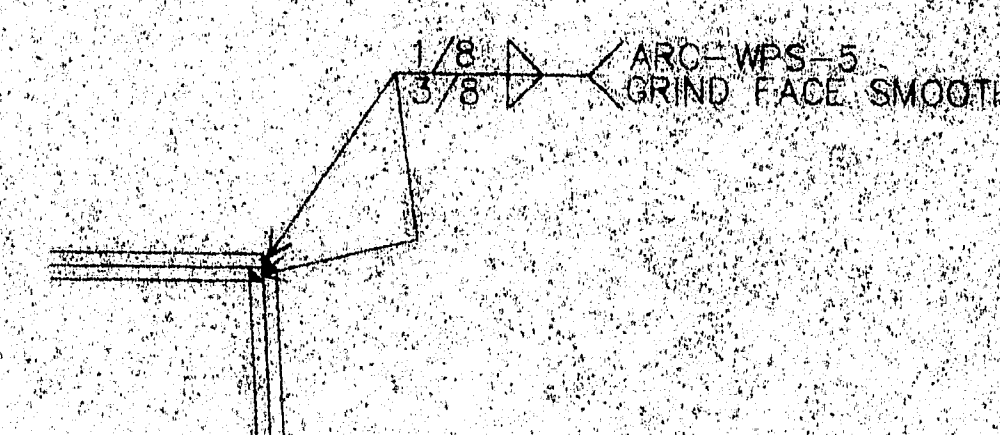


PLAN @ CURB DAM
MAKE ONE AS SHOWN & ONE OPP. HAND

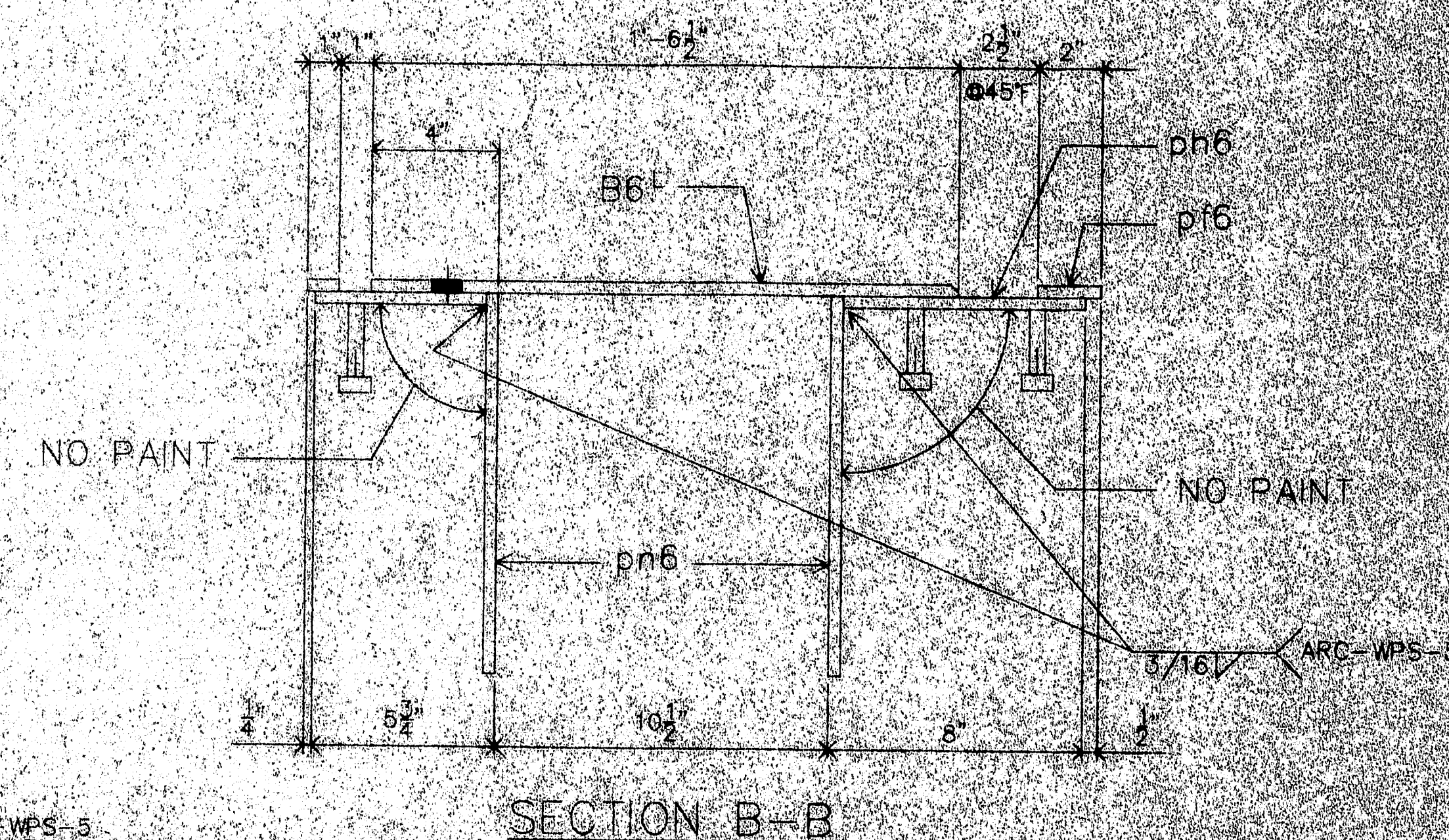


SECTION A-A

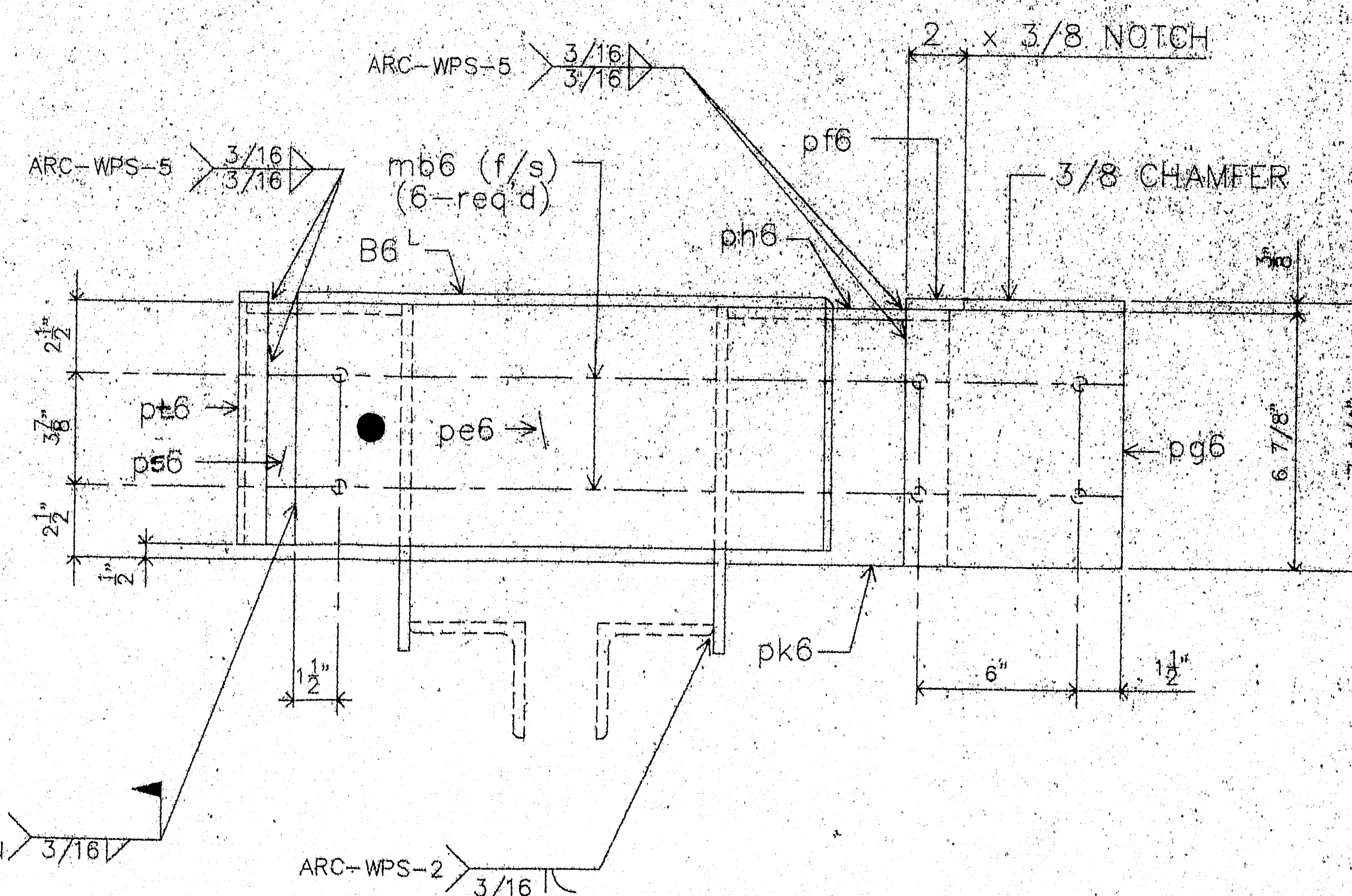
GC NOTE:
FIELD CUT THIS END OF EXP. JOINT
& SIDE PLATES OF SIDEWALK DAMS
AS REQ'D TO FIT EXIST. CONDITIONS.
REFER TO DESIGN DWG'S.



SECTION C



SECTION B-B



ELEVATION @ FACE OF CURB

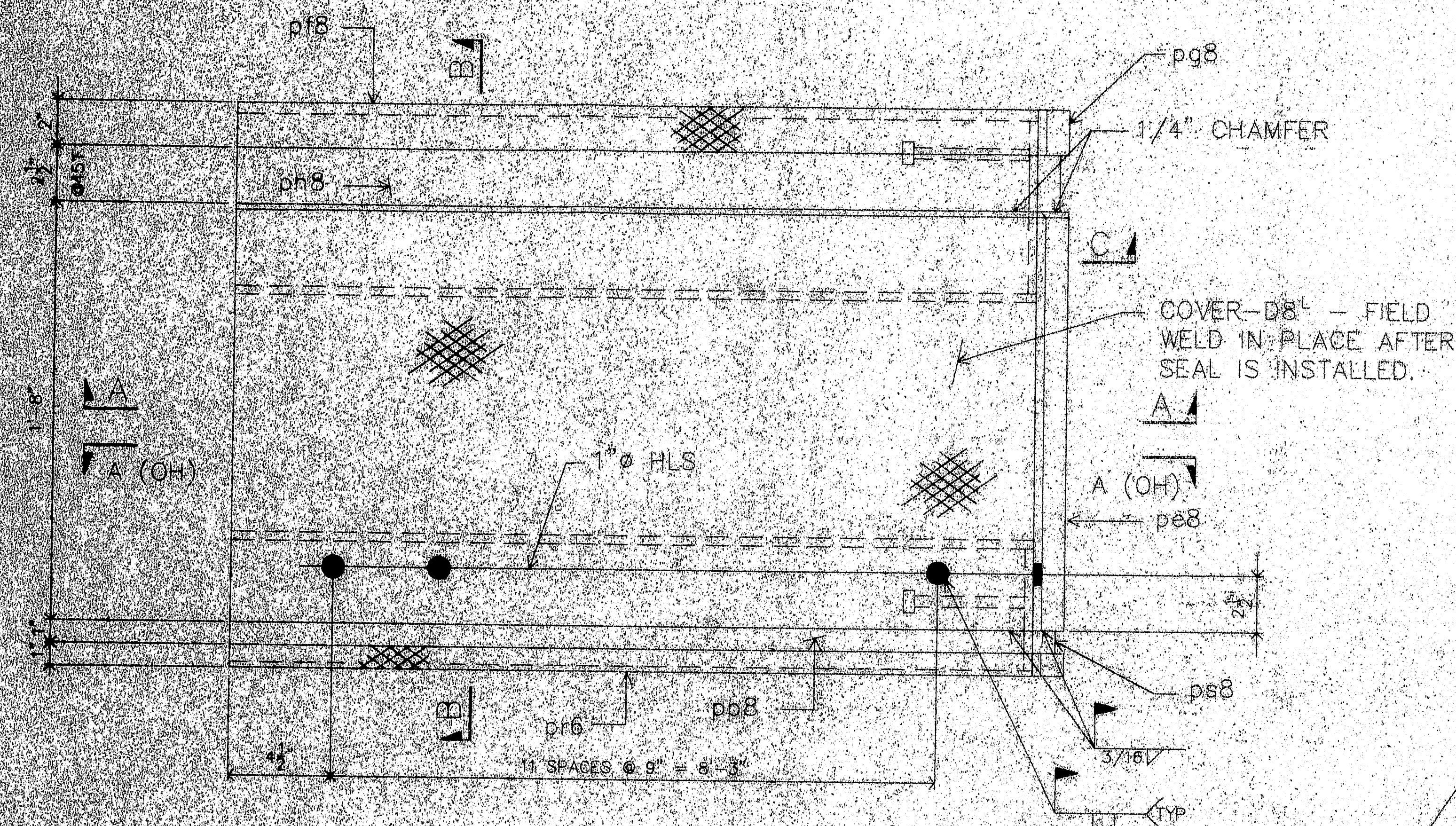
PROJECT NO. BH-0205(2)X
ITEM NO. 520.21

MATERIAL: A36 UN
WELD: PER PROCEDURES NOTED
PREP: SP6
FINISH: 3 S/C OF WASSER MC - ZINC

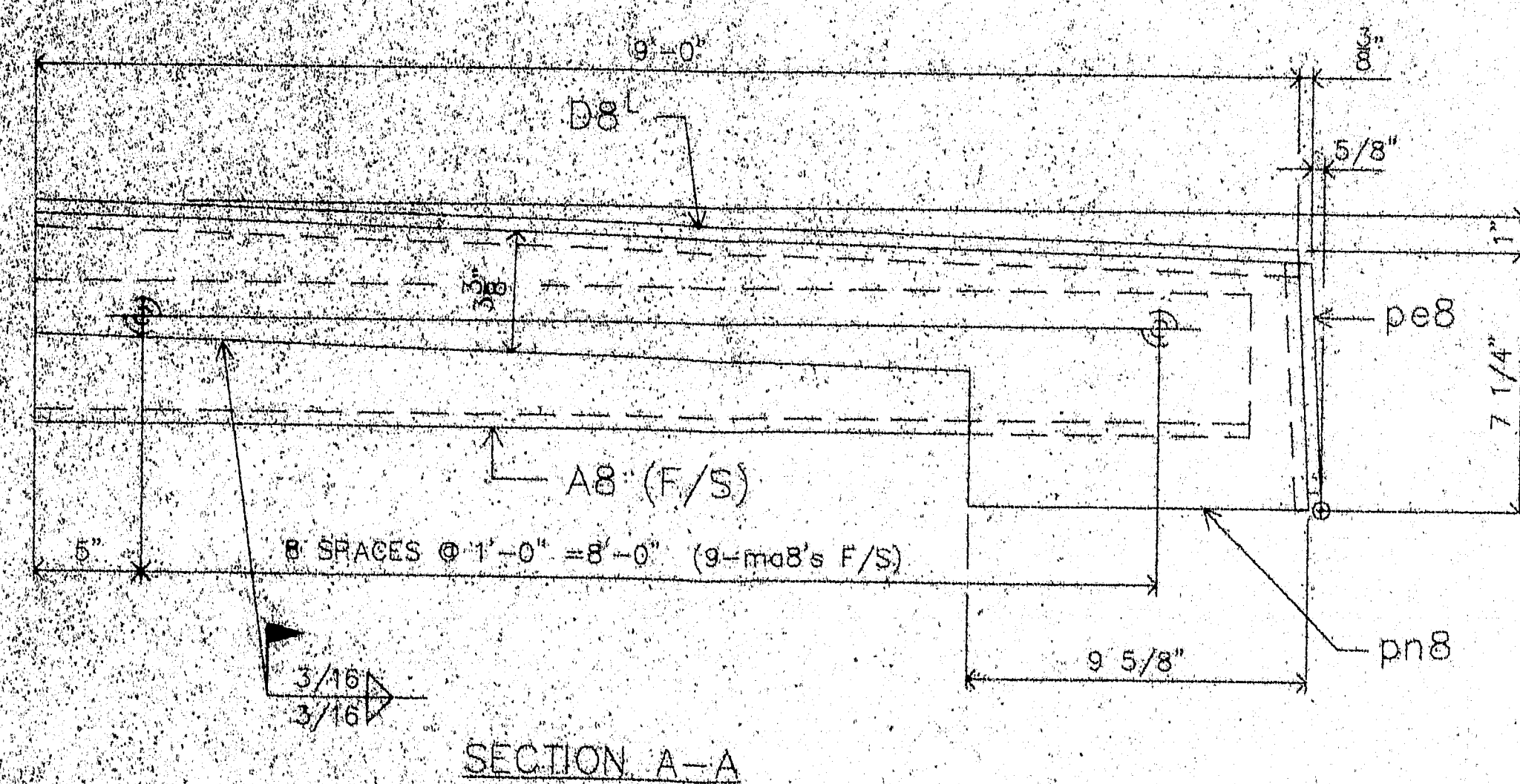
FIELD USE

A.R.C. ENTERPRISES KINGFIELD, MAINE			
PROJECT: SOUTH BRIDGE OVER ANDROSCOGGIN RIVER LEWISTON-AUBURN, MAINE			
SCALE: 1/4" = 1'-0"	APPROVED BY:	DRAWN BY: 88 JONES	DATE: 8/96
SIDEWALK DAM DETAILS FOR ABUT # 2			
DIAZ CORP.			

115-394

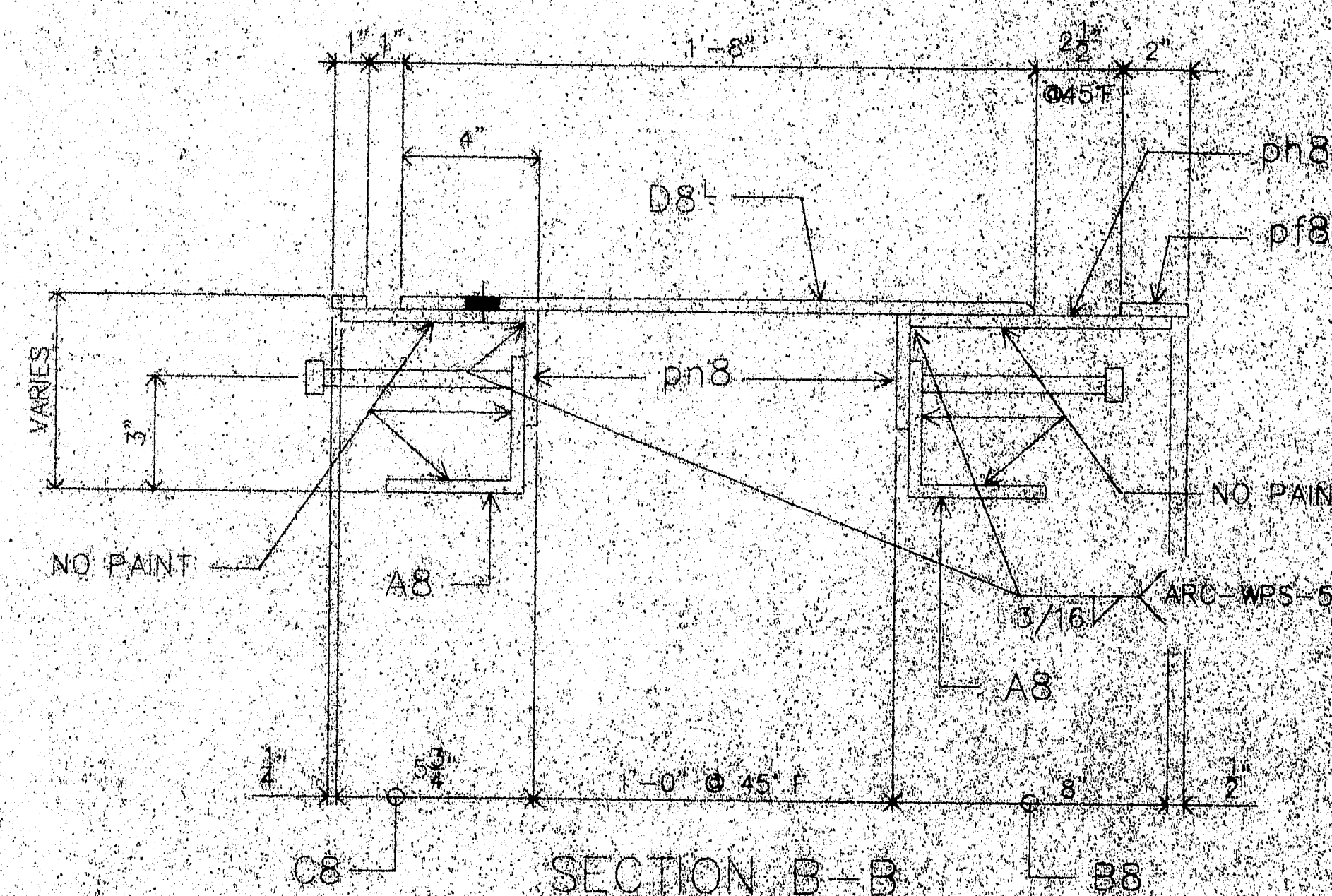


PLAN @ WEST SIDEWALK DAM @ PIERS 1 & 2 (AS SHOWN)
(2-REQ'D)
EAST SIDEWALK DAM @ PIERS 1 & 2 (OPP. HAND)
(2-REQ'D)

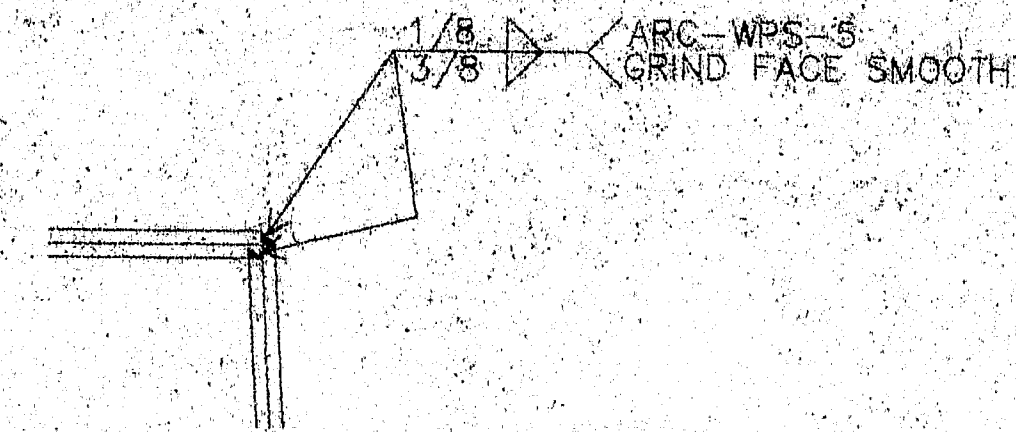


SECTION A-A

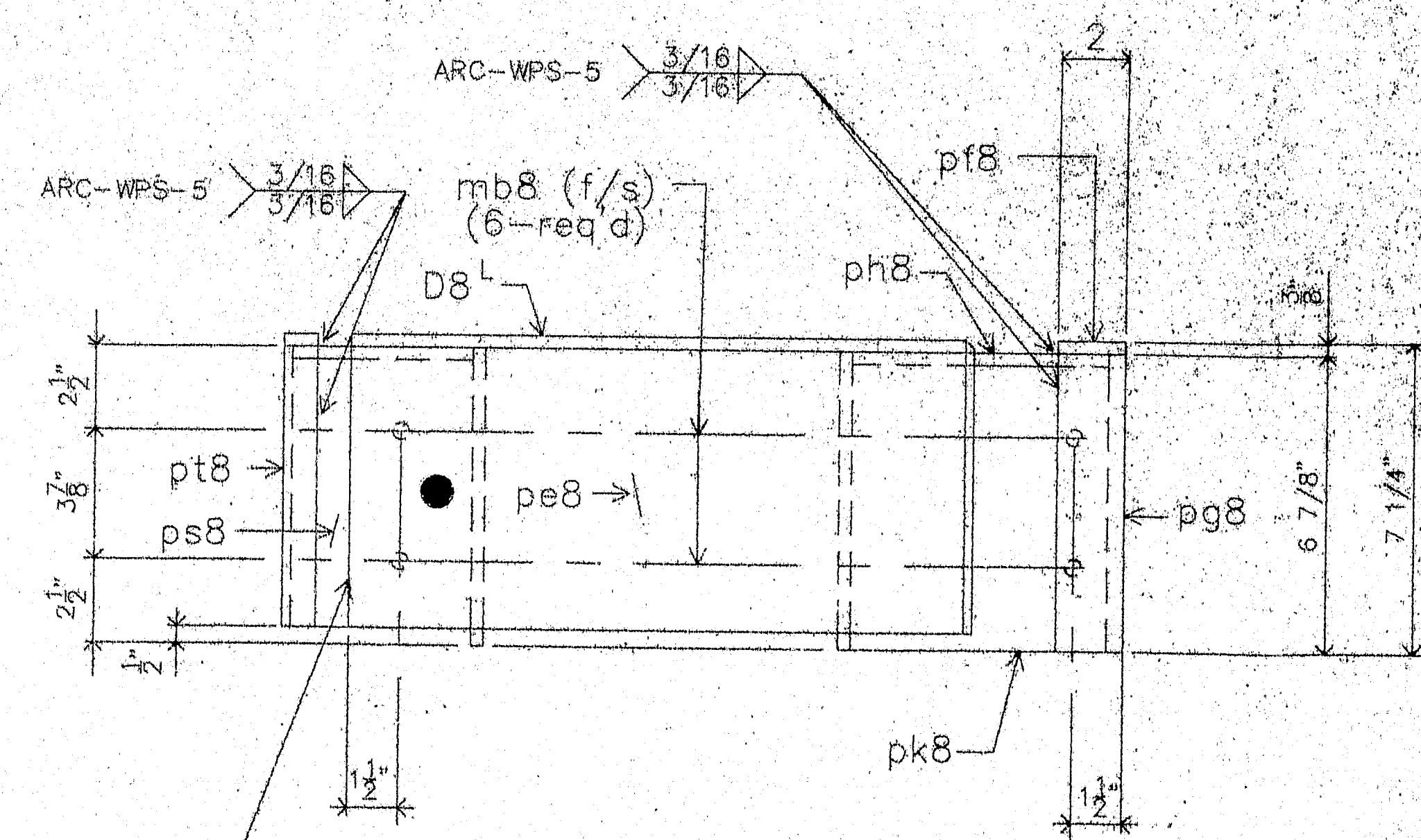
GC NOTE:
FIELD CUT SIDE PLATES OF SIDEWALK DAMS
AS REQ'D TO FIT EXIST. CONDITIONS.
REFER TO DESIGN DWG'S.



SECTION B-B



SECTION C



ELEVATION @ FACE OF CURB

MATERIALS LIST

MARK	QTY	DESCRIPTION
A8	8	1/4 X 4 X 8-3/8 X 8-10"
mb8	72	1/2 X 0-5-6 CONG STUDS
B8	4	SIDE PLATE ASSEMBLY 2L-2R
ph8	4	CHK'D PL 3/8 X 2 X 0-5-6
pg8	4	PL 3/8 X 2 X 0-5-6 7/8
ph8	4	PL 3/8 X 7-3/4 X 8-11 5/8
pk8	4	PL 3/8 X 6-1/2 X 0-7 3/4
pn8	4	PL 1/4 X 7-7/8 X 9-0 5/8 SHP'D
C8	4	SIDE PLATE ASSEMBLY 2L-2R
ph8	4	PL 1/4 X 7-7/8 X 9-0 5/8 SHP'D
pg8	4	PL 3/8 X 5-1/2 X 8-11 5/8
ph8	4	CHK'D PL 3/8 X 1 X 9-0
ps8	4	PL 3/8 X 5-1/2 X 0-6 3/8
pt8	4	PL 3/8 X 1 X 0-6 3/8
D8	4	CHK'D PL 3/8 X 20 X 8-0 4L-2R
pe8	4	PL 3/8 X 5-3/8 X 1-8
mb8	136	1/2 X 0-8 CONG STUDS
PROJECT NO. BH-0205(2)X		
ITEM NO. 520.21		

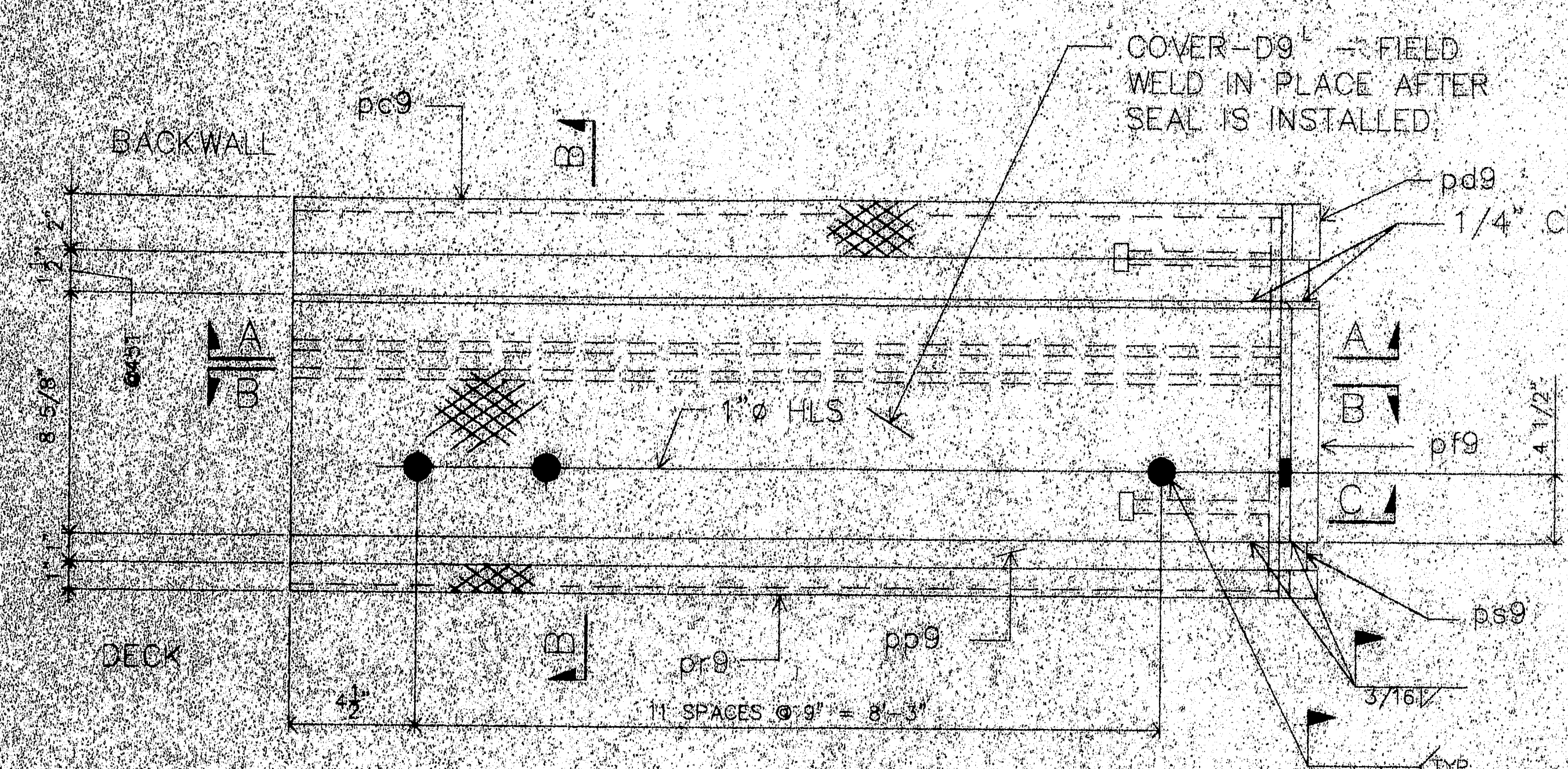
MATERIAL A36 UN
WELD: PER PROCEDURES NOTED
PREP: SP6
FINISH: 3 S/C OF WASSER MC - ZINC

FIELD USE

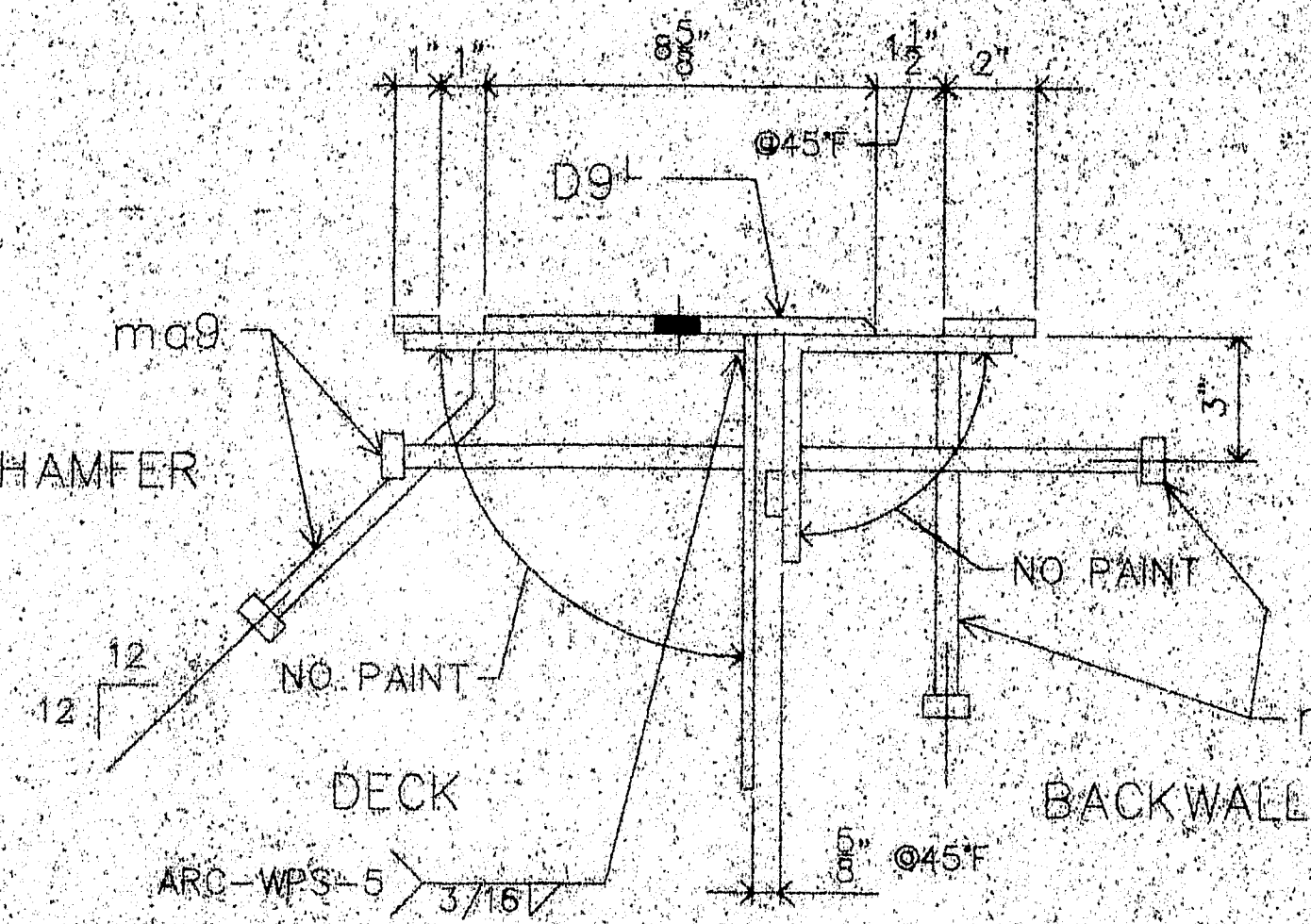
A.R.C. ENTERPRISES
KINGFIELD, MAINE

PROJECT:	SOUTH BRIDGE OVER ANDROSCOGGIN RIVER LEWISTON-AUBURN, MAINE		
SCALE:	APPROVED BY:	DATE:	8/98
DATE:	8/98	CHD BY:	88/CHD
SIDEWALK DAM DETAILS FOR PIER 1 & 2			
DIAZ CORP			

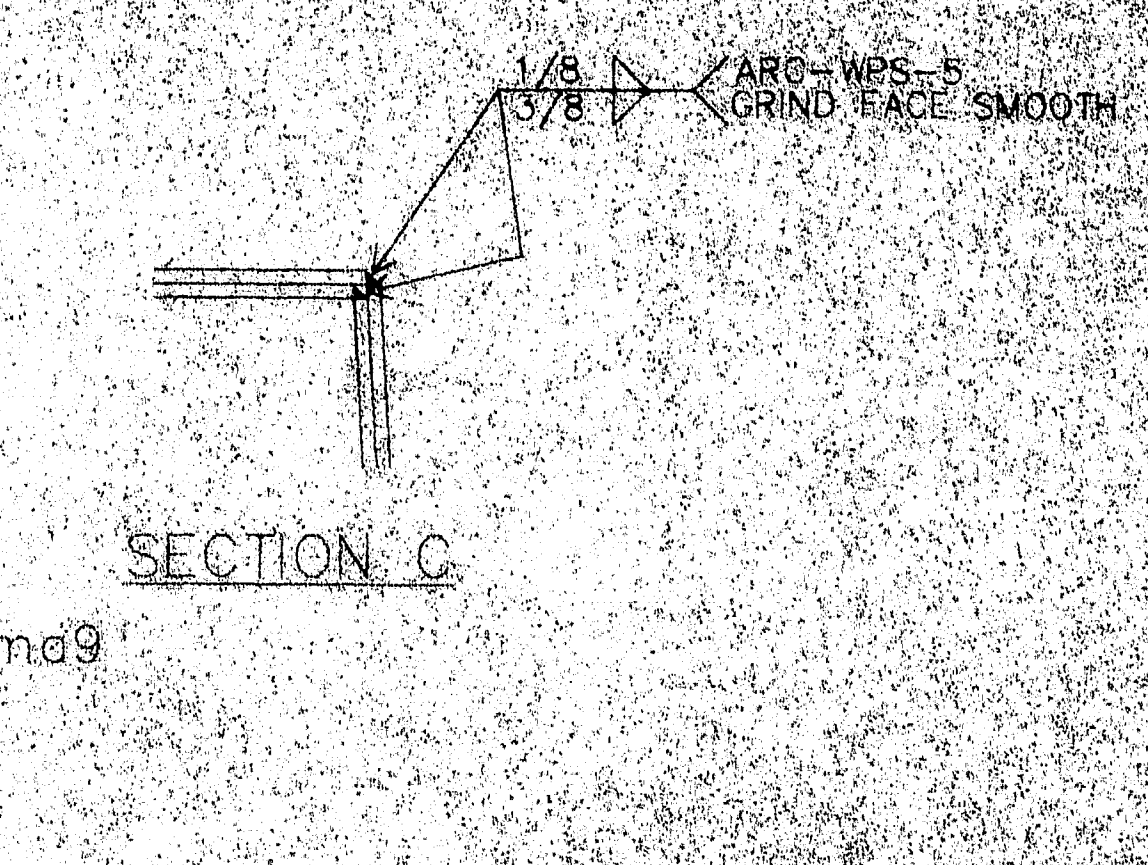
115-395



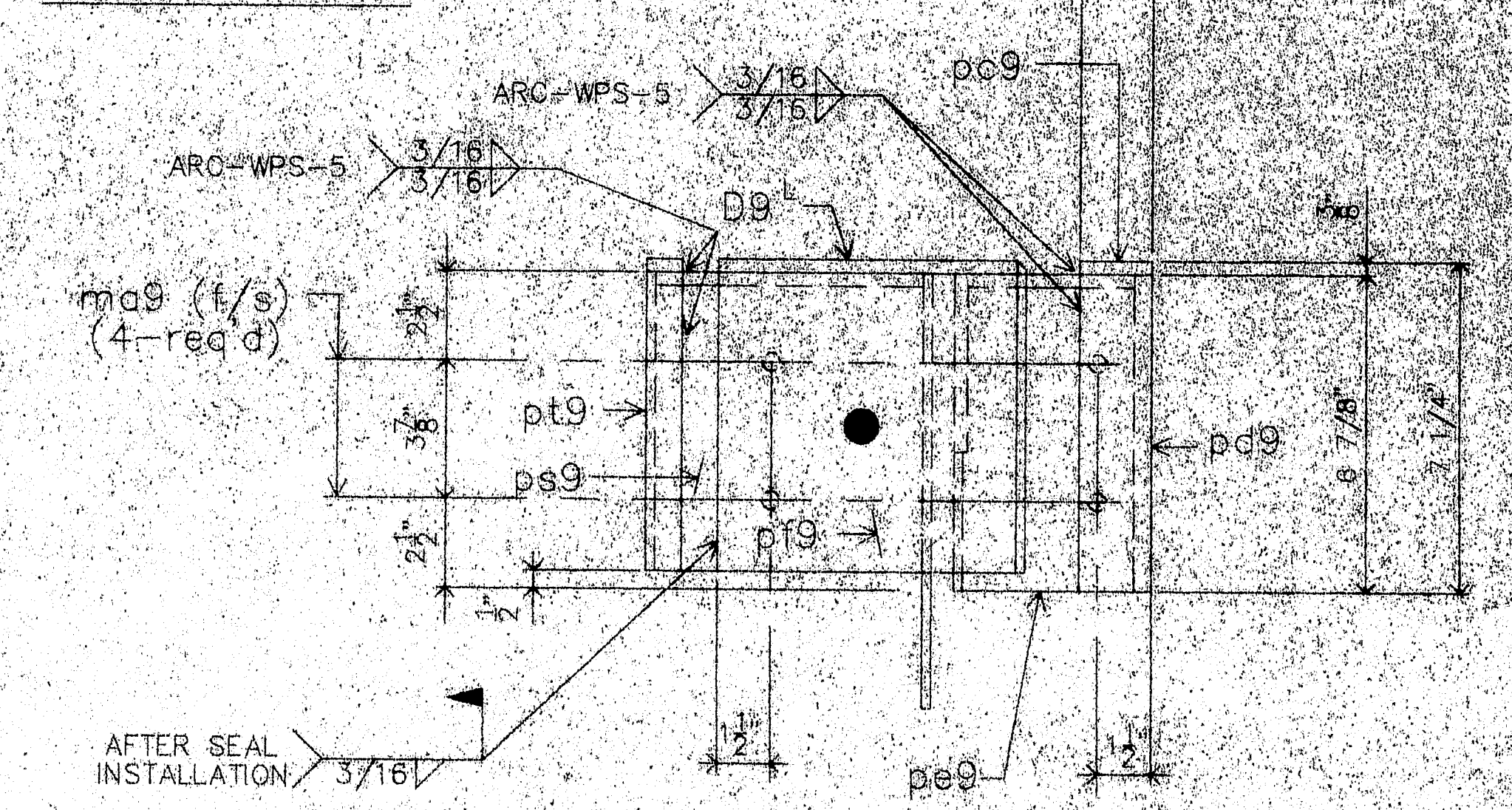
PLAN @ WEST SIDEWALK DAM @ ABUT #1 (AS SHOWN)
(ONE-REQ'D)
EAST SIDEWALK DAM @ ABUT #1 (OPP. HAND)
(ONE-REQ'D)



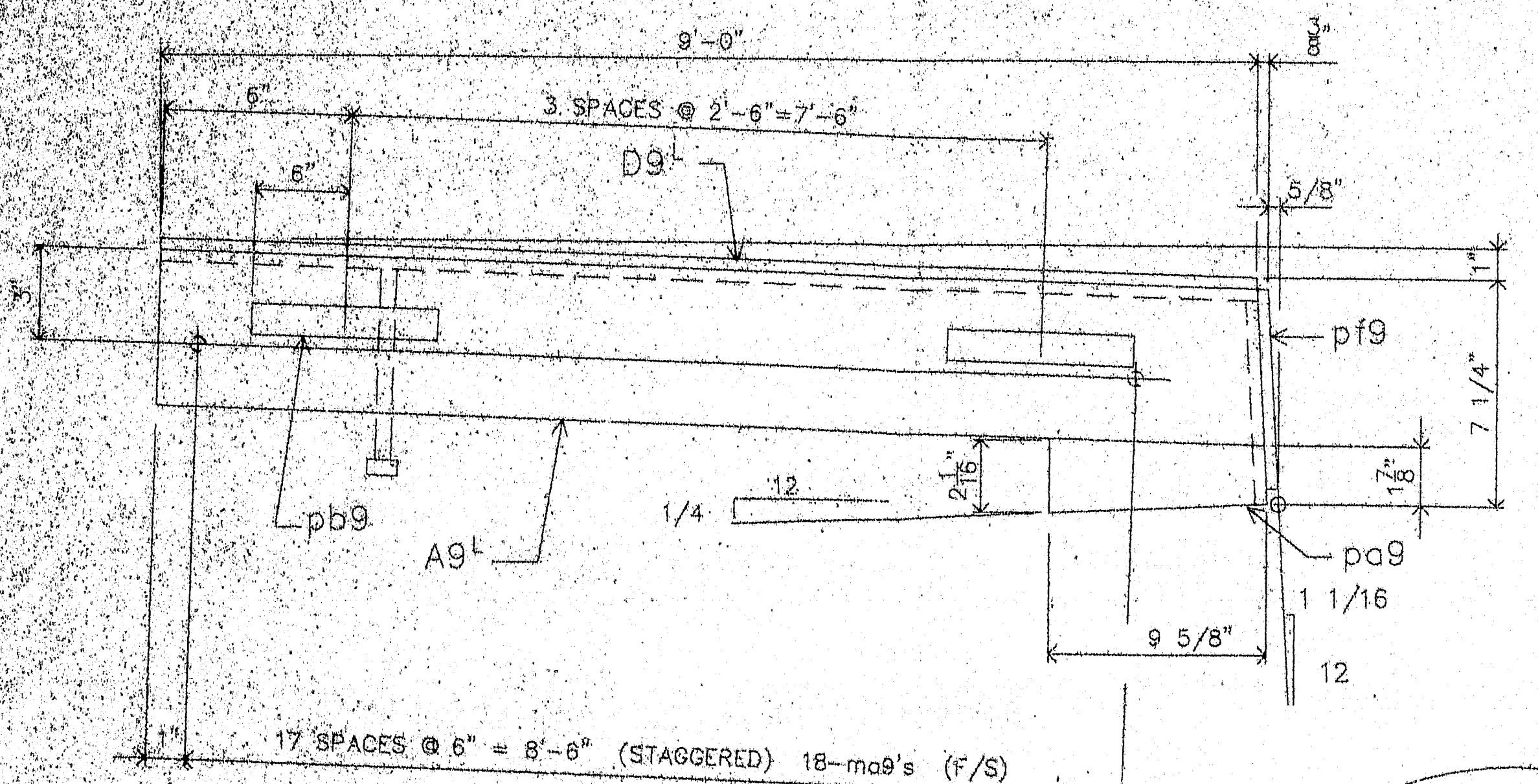
SECTION B-B



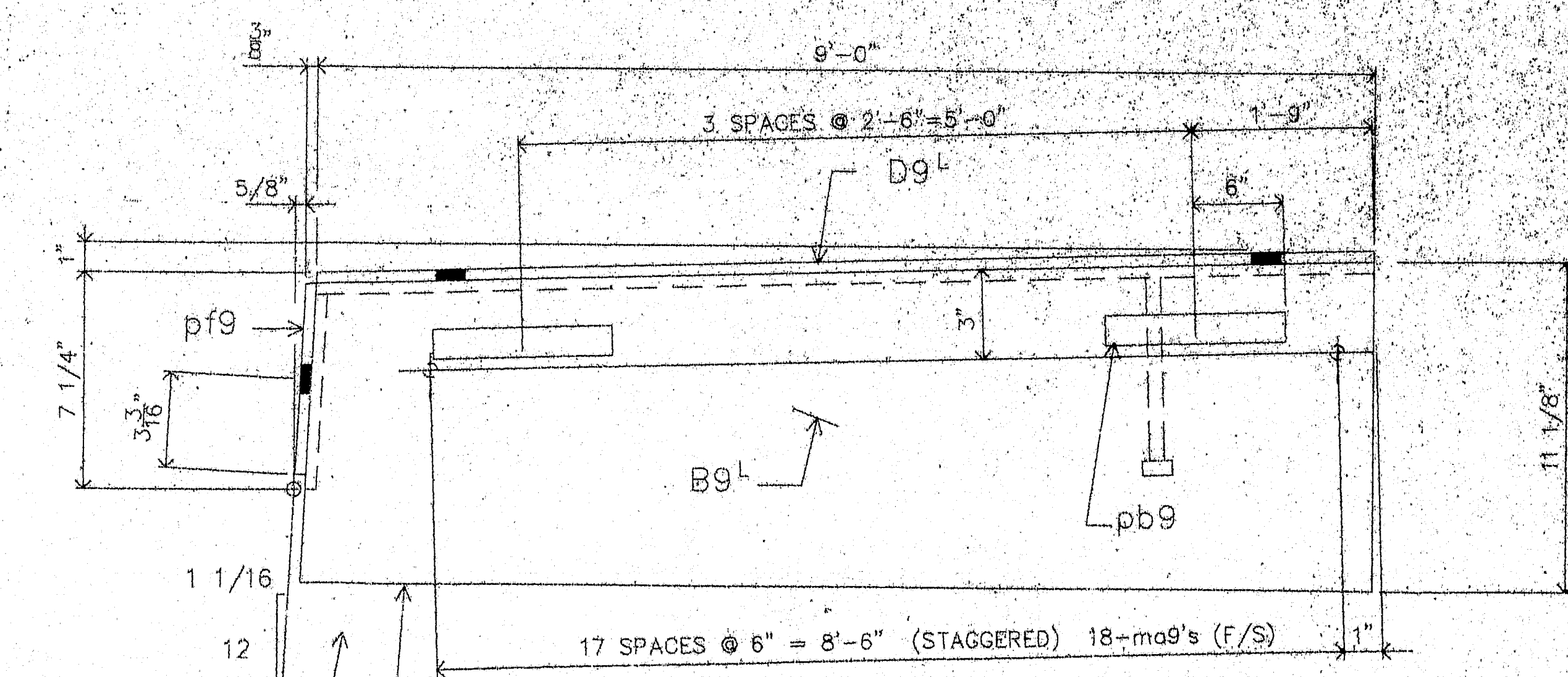
SECTION C



ELEVATION @ FACE OF CURB



SECTION A-A



SECTION B-B

GC NOTE:
FIELD CUT TO FIT END
OF EXP. JOINT.

GC NOTE:
FIELD CUT SIDE PLATES OF SIDEWALK DAMS
AS REQ'D TO FIT EXIST. CONDITIONS.
REFER TO DESIGN DWG'S.

MATERIALS LIST

MK	QTY	DESCRIPTION
A9	2	L 5 X 5 X 3/8 X 9'-0" 1/2" 3L-1R
ma9	40	1/2" X 0'-8" CONC STUDS
pd9	2	PL 1/4 X 2 1/16 X 0'-9 5/8 SHPD
pc9	6	FL 1 X 3/8 X 1'-0"
ps9	2	CHK'D PL 3/8 X 2 X 9'-0"
pp9	2	PL 3/8 X 2 X 0'-6 7/8
pa9	2	PL 3/8 X 4 3/4 X 0'-6 1/2 SHPD
pb9	2	PL 3/8 X 1 X 0'-8 3/8
pt9	2	CHK'D PL 3/8 X 5 5/8 X 0'-0" 1L-1R
pf9	2	PL 3/8 X 6 3/8 X 0'-8 5/8
ma9	40	1/2" X 0'-8" CONC STUDS
D9	2	CHK'D PL 3/8 X 6 5/8 X 0'-0" 1L-1R
pf9	2	PL 3/8 X 6 3/8 X 0'-8 5/8

PROJECT NO. BH-0205(2)
ITEM NO. 520.21

MATL: A36 UN HOLES: AS NOTED
WELD: PER PROCEDURES NOTED
PREP: SP6
FINISH: 3 S/C OF WASSER MC + ZINC

FIELD USE

A.R.C. ENTERPRISES
KINGFIELD, MAINE

PROJECT: SOUTH BRIDGE OVER ANDROSCOGGIN RIVER
LEWISTON-AUBURN, MAINE

SCALE: ~ APPROVED BY: _____ DRAWN BY: TBB/CHDS
DATE: 8/96 CHECKED BY: _____

SIDEWALK DAM DETAILS FOR ABUT # 1
DIAZ CORP. JOB NO. 96-05 DWG. NO.

115-396